

PE 100 Ball Valve



POLYETHYLENE VALVES FOR WATER AND GAS APPLICATIONS

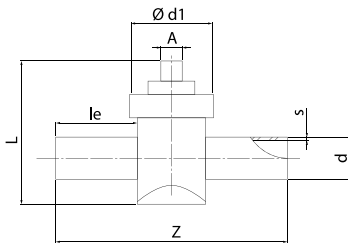
*Dimensions between 32mm to 200mm.
Suitable for Butt welding and Electrofusion welding.
Suitable for mechanical connections.
No metal parts in or outside of product.
Double up and downstream tightness.*

APPLICATIONS

*Natural gas collection, natural gas distribution, landfill gas,
hydrocarbon fuel gases, hydrogen, air, other inert gases,
potable water and sewage*

BALL VALVE

PE100



d	Article No	Z	L	le	d1	s	A	Weight	Box
mm		mm	mm	mm	mm	mm	mm	kg	pcs
32	135 117 9310 0032	260	190	70	110,0	3,0	49,5	0,910	1
40	135 117 9310 0040	260	190	70	110,0	3,7	49,5	0,940	1
63	135 117 9310 0063	360	227	120	110,0	5,8	49,5	1,630	1
90	135 117 9310 0090	345	225	105	110,0	8,2	49,5	2,410	1
110	135 117 9310 0110	400	275	105	110,0	10,0	49,5	3,880	1
125	135 117 9310 0125	400	280	106	110,0	11,4	49,5	4,030	1
160	135 117 9310 0160	450	360	116	110,0	14,6	49,5	7,880	1
180	135 117 9310 0180	540	350	117	110,0	18,2	49,5	9,860	1
200	135 117 9310 0200	540	350	112	110,0	18,2	49,5	10,760	1